

Mountnessing C of E Primary School's SEND Information Report

Unlock every child's potential as a unique child of God

Ephesians 3.17-19

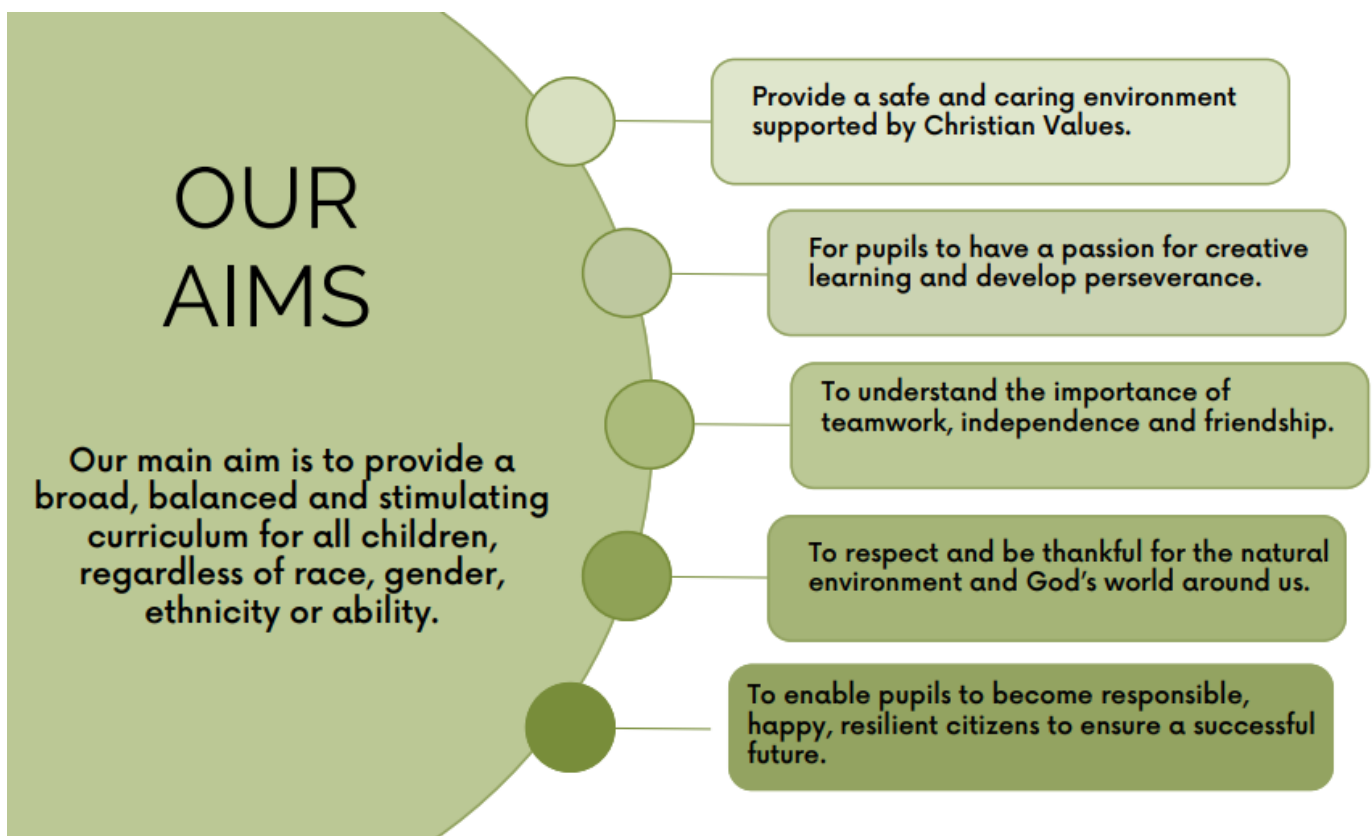
May Christ dwell in your hearts through faith, that being rooted and grounded in love, you may have the power to comprehend, with all the saints, what is the breadth and length and height and depth, and know the love of Christ that surpasses all knowledge, so that you may be filled with all the fullness of God.

Our SEND Information Report provides details about how we support children and young people with special educational needs and disability (SEND) in our school and forms part of the Essex County Council local offer:

<https://send.essex.gov.uk/>

School ethos for SEND

At Mountnessing we strive to provide a safe and caring environment where all pupils have a passion for learning and creativity. We value **all** contributions made by **all** children, professionals and parents to help enhance and maintain our inclusive school community. Our intention is to identify and break down possible barriers to learning so that all of our pupils are supported to achieve their full potential.



Admissions Policy – Our admissions can be viewed on our school website

<https://www.mountnessing.essex.sch.uk/admissions/>

All school admissions are dealt with by Essex County Council rather than the school. Parents will receive a 'Common Application Form' which must be completed and returned to Essex County Council by the closing date. Alternatively you may apply online at www.essexcc.gov.uk/admissions. For any further information you may call Essex County Council Planning and Admissions on 0845 603 7627 or the school office 01277 353160.





School tours are available on a regular basis. They are open to all prospective parents, no matter how old your child is. Please contact the school office to make an appointment with the Head Teacher.

The school recognises that a child or young person has a special educational need if they:

- Have a significantly greater difficulty in learning than the majority of others the same age.
- Require provision different from or additional to (ASI) that normally available to pupils of the same age.
- Have a disability which prevents them or hinders them from making use of the facilities of a kind generally provided for others of the same age in mainstream school.

This is defined in the *Special Educational Needs and Disability Code of Practice: 0-25 years (2015)*. The school makes provision in accordance with the *SEND code of practice (2015)*; *The Equality Act (2010)*; *The Special Educational Needs and Disability Regulations (2014)* and the *Children and Families Act (2014)*.

There are four broad areas of special educational need defined in the *SEND Code of Practice (2015)*. These are:

	Cognition and Learning
	Communication and Interaction
	Social, Emotional and Mental Health
	Sensory and Physical

The school provides data on the levels and types of need to the Local Authority. This is collected through the school census.

Identification and Early Intervention

Early identification of SEN and early intervention are the key to ongoing success for our pupils. Transition arrangements for children joining the EYFS are robust and support is put in place where additional needs are made apparent. We liaise with parents and pre-schools.

In deciding whether to make special education provision to support educational, social, physical or emotional needs, we:

- Work in partnership with parents/carers and pupils
- Use assessment tools and materials
- Use observations
- Consult with relevant external agencies (if available)

Where a pupil is identified as having a special educational need we follow a graduated approach which takes the form of **Assess, Plan, Do, Review**. This means that we will:

Assess a child's special educational needs. This would include assessment by the teachers supported by the SENDCO. This may include observations and assessments carried out by external agencies.

Review the support and progress. The impact of any strategies or interventions is reviewed with teachers, parents/carers and the child, looking at progress towards targets and next steps.

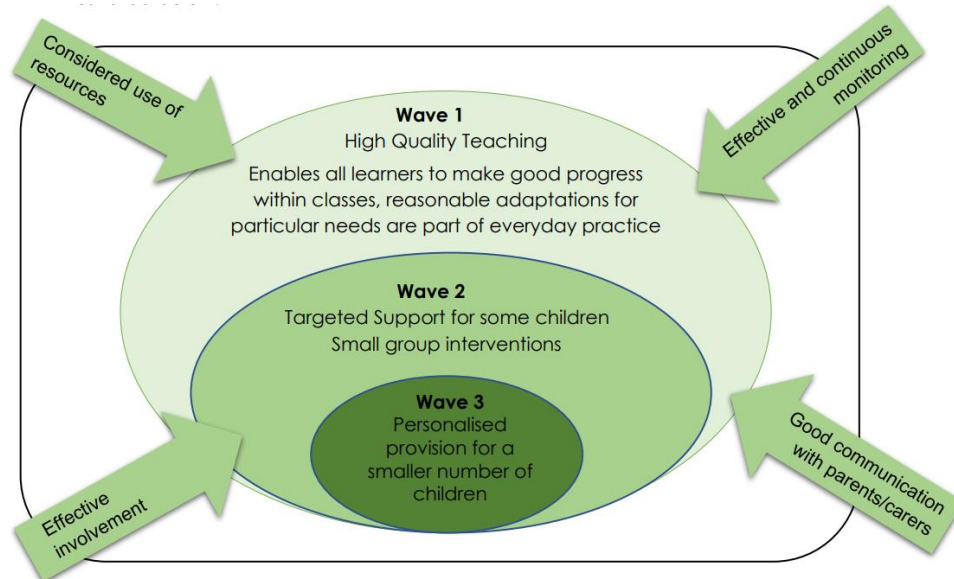


Plan the provision to meet your child's aspirations, needs and agreed outcomes. Additional or different provision is planned by the class teacher with support from the SENDCO and external advice. Outcomes are discussed and agreed at 'one plan' meetings with parents/carers and the child (where appropriate).

Do what we planned. We put the provision in place to meet those outcomes. This may be strategies we have agreed to use in the classroom or interventions that will take place during the day.

As part of this process every child with SEND will have a One Plan that describes the child's strengths, needs, outcomes and provision to meet those needs. Parents/carers and child's views are integral to this process and this is reviewed termly. We encourage the children to take ownership of their outcomes and talk openly about what they want to achieve and how they want to achieve it.

A small percentage of children with significant and/or complex needs may require an assessment that could lead to an Education, Health and Care Plan. An EHC assessment would be carried out where the current levels of support and intervention are not leading to improved progress for the child and where further support might be needed to ensure the needs of an individual child are fully met.



Most children at our school will have their special educational needs met through excellent classroom practice. This is called **High Quality Teaching (Wave 1.)** Teachers set high expectations for every pupil, whatever their prior attainment. Lessons are planned to address potential areas of difficulty and to remove barriers to pupil achievement (differentiation, intervention strategies, individual and group support.) Such planning will mean that most pupils with SEN and disabilities will be able to study the full National Curriculum.

Where the class teacher identifies that high quality teaching is not meeting the child's specific learning needs, additional observations and assessments are undertaken and discussed with the SENDCO. If required, the child is given **Additional School Intervention Support (ASI) (Wave 2)** which is 'different from and in addition to' our differentiated curriculum. After discussion with parents/carers and where appropriate the child, a one plan would be developed with individual targets and strategies to work towards achieving them. This would mean additional work in a small group or on a one-to-one basis to carry out specific interventions to support a child to meet their individual needs. The SENDCO works alongside class teachers and LSAs to oversee SEN provision and monitor the progress of any child requiring additional support.

Staff at Mountnessing have experience of dealing with a wide range of specific learning difficulties. Staff members are encouraged to attend relevant CPD courses and feedback their learning to inform others where appropriate.

We currently work with Kids Inspire. This gives us access to counselling, and a variety of other services which can be tapped into according to need. We access this through a referral process alongside the parents.

A child who, despite having extra provision is still failing to make significant progress, may be identified as having **Higher Needs (Wave 3)**. Where appropriate, other agencies will be asked to work alongside the school to assess a child and plan for their needs. At all stages parents/carers will be involved in the process. This level of intervention is for pupils with more complex and/or enduring difficulties and may include:

- Specialist teacher visits (Inclusion Partner liaison)
- Speech and Language Therapist involvement
- Educational Psychologist involvement
- Occupational Therapist involvement
- Paediatrician involvement
- Specialist Community Health Visitor involvement
- Assessments and monitoring to ensure appropriate intervention and access to learning



Reviewed and Edited September 2025

Next Review September 2026

If a parent/carer wishes to appoint a therapist privately we encourage parents to share the specialist's findings with the school. It is not common practice for private agencies/therapists to pass on their reports directly to schools.

It is not the school's role or practice to diagnose specific conditions, but we may be able to assist with further support and signposting.

Parent Consultations

Parents of children who are on our SEND list will be invited to 3 further 'one plan' meetings a year in the Autumn, Spring and Summer term. These meetings are used to celebrate your child's learning, look at the progress they have made against the targets set, create new targets and discuss next steps. A copy of this will always be sent home after the meetings. Further to this, parents of children who have an EHCP will also be invited to a yearly 'annual review' to review the progress made towards their child's EHCP outcomes and make any amendments necessary.

Child Consultations

Pupil's views are very important; they have a right to be involved in decisions about their education and they are made aware of the support that surrounds them in school.

Children are fully involved and their views feed directly into all policies, procedures and daily teaching of children with SEND.

Pupils are given regular opportunities to:

- Share their views
- Self-assess how they are doing
- Attend meetings and help decide the support needed.
- Feedback and Review progress/interventions.

Specialist equipment and site adjustments

We are committed to ensuring that children and young people with SEN are enabled to engage with activities available with children in the school who do not have SEN. The school has a range of equipment to ensure access to both the curriculum and the school site. There are disabled toilets, ramps and writing aids. In accordance with the *Equality Act (2010)*, we will make reasonable adjustments to prevent disabled children being put at a substantial disadvantage. More information can be obtained by contacting the SENDCO.

Transition between phases of education

The school works closely with parents and other schools to ensure that transition meets the needs of the pupils in our care. A number of strategies are in place to enable pupils' effective transition into our school and on to secondary school.

A planned induction programme is delivered in the summer term to support transfer for pupils starting school in September. Parents/carers are invited to a meeting at the school and are provided with a range of information to support them in enabling their child to settle into the school routine. The SENDCO meets with all new parents of pupils who are known to have SEN to allow concerns to be raised and perceived challenges to be anticipated prior to entry. If pupils are transferring from another setting, the previous school records will be requested immediately and a meeting set up with parents to identify and reduce any concerns.

Reviewed and Edited September 2025

Next Review September 2026

To support transition to Key Stage Three, secondary schools provide a number of opportunities for pupils and parents to meet staff in the new school. These opportunities are further enhanced for pupils with SEND and identified on the secondary school's websites. The annual review in Y5 for pupils with an EHCP begins the process where parents are supported to make decisions regarding secondary school choice. Parents will be encouraged to consider options for the next phase of education and the school will involve outside agencies, as appropriate, to ensure information provided is comprehensive but accessible. Accompanied visits to other providers may be arranged as appropriate.

Arrangements for pupils with SEN undertaking tests

Where a child is able to access the SATs tests a number of additional arrangements can be put in place to support them:

- Additional time
- Rest breaks
- A reader
- A scribe
- Adapted papers

How we evaluate the effectiveness of SEN provision

We evaluate the effectiveness of SEN provision through monitoring impact and pupil progress. As a school we carry out a range of monitoring including lesson observations, book looks and discussions with pupils. We also carry out pupil and parent surveys which cover the quality of teaching and learning and SEN provision. Feedback is used to inform future planning.

The SENDCO

SENDCO – Alice Murray

Part time – 3 days a week.

She is contactable in person by phone or email.

(Wednesday – Friday) 01277 353160

senco@mountnessing.essex.sch.uk



School office

8am – 4pm Mon – Fri

01277 353160

admin@mountnessing.essex.sch.uk

Alice has completed the National Award for SENCO Training and is a qualified teacher.

She plays a key role in school, regularly meeting with senior staff, teachers, LSAs, families, named governors and professionals. She identifies training opportunities and monitors the quality and impact of interventions.

The Governing Body

The Governing Body demonstrates good financial management, thus the building and resources are fit for purpose and fully inclusive.

The specific SEND Governors role is to regularly support and challenge the SENDCO about the provision for SEND pupils. SEND Governor visits the SENDCO and reports back to the GB.

The Head Teacher also reports to the GB.

Reviewed and Edited September 2025

Next Review September 2026

Brentwood Collaborative Partnership



Mountnessing is a member of the Brentwood Collaborative Partnership (BCP) whose purpose is to share experience and expertise of SEND across the membership schools. By pooling our resources we are able to provide access to SEND experience as listed in our current directory. In addition to these services all schools within the BCP have access to the help and advice of the SEND team at the Endeavour School and Grove House (Special Schools). They are also able to provide training and advice for staff and parents as an outreach service to our school.

Working in Partnership with Families

Building relationships with parents is a key part of our working practice. Parents may access professionals in the school at any point through email, telephone conversations and arranged meetings. Parents are able to discuss issues with teachers informally after school and at two formal parents' evenings. Parents/carers of children and young people with SEN will have contact from the school at least once per term to ensure that their child's progress is understood and the ways to support their child are decided and clear. We encourage parents to contact the school at their earliest convenience if they have any questions or need some information.

Our pupils are at the heart of what we do and we ensure that their voice is paramount in what we do with and for them. We use a range of techniques to enable our students to tell us what their issues are and the best ways we can help and support them. Meetings with the SENDCO are based around person centred techniques, meaning that the child's views are listened to and valued.

The school is committed to working with parents to ensure the needs of our pupils are met.

There are many other agencies that parents can access for support, including:

Essex Local Offer www.essexlocaloffer.org.uk

SNAP www.snapcharity.org 01277 211300

FACE- Families Acting for Essex info@face-essex.org 01245 608231

Larchwood Gardens Family Hub 0300 247 0013

Brentwood Healthy Family Team 0300 247 0013

Families in Focus (Essex) www.familiesinfocus.essex.org.uk

Parent Partnership Parentpartnership@essex.gov.uk 01245 436036

Children's Integrated Therapies www.nelft.nhs.uk/services-essex-childrens-integrated-therapies 0300 300 1555

InterAct www.interact.org.uk/about/about-us 01245 608201

The Children's Society East www.childrenssocietYEAST.org.uk

IPSEA www.ipsea.org.uk

The school has an 'open door' policy. We aim to resolve any issues swiftly and in person, often coming to mutual understanding and agreement.

A parent's first port of call is to arrange for a meeting with the class teacher. If necessary, they would then go to the SENDCO, after which, the matter progresses to the Head Teacher.

In the unlikely event that the matter is not concluded, the complaints policy is available on our website or available from our school office on request. <http://www.mountnessing.essex.sch.uk/>