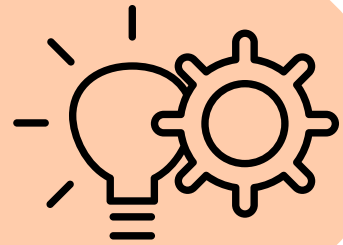


MANAGING ATTENDANCE

MONITORING

Attendance is monitored in school daily, weekly and half termly.



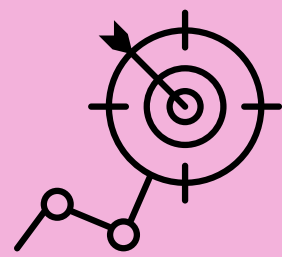
CONTACT

If your child's attendance falls below 95% we will write to you to let you know.



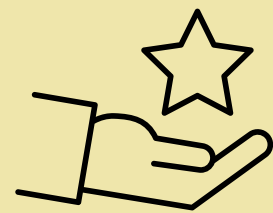
TRACKING

Your child's attendance will be tracked to see improvements. If it continues to fall then further contact will be made to meet with you.



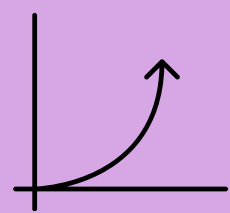
CONCERNS

If your child's attendance falls below 90% it is classed as persistent absenteeism. We will call you in for a meeting with the head teacher to discuss the reasons for absence and to create an action plan for improvement.



REVIEW

Your child's attendance will be reviewed for a period of time. If it improves, we will celebrate with you and continue to track until it is over 95%. If their attendance declines we will call in further support.



SUPPORT

We may enlist the help of Local Authority Attendance Specialists. If attendance does not improve, legal action may be taken in the form of a Penalty Notice, prosecution in the Magistrates Court or the application of an Education Supervision Order, designed to strengthen parental responsibilities and ensure improved attendance.

We can contact additional support through the School Nurse, Local Attendance Adviser, Home School Liaison Worker, Local Authority, Family Solutions or Social Care.



MAINTENANCE

Attendance will be monitored until it reaches a satisfactory level.

